

Supporting our Industry to Deliver Sustainable Change

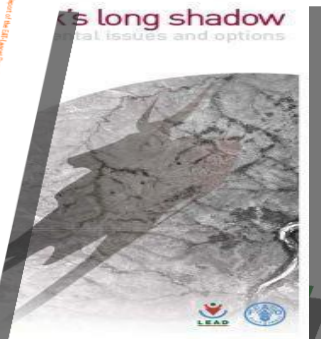
Managing Your Risks - Environment

Dr Jonathan Foot – Head of Environment AHDB

National Perspective



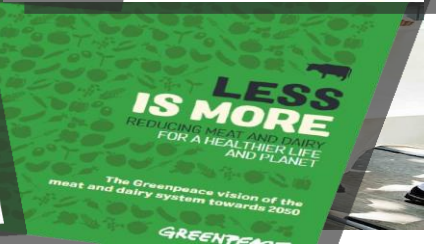
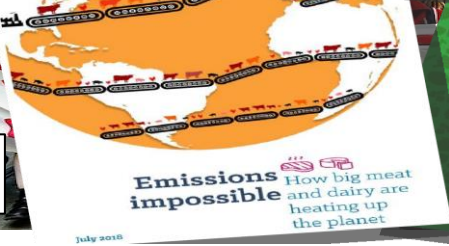
Avoiding meat and dairy is 'single biggest way' to reduce your impact on Earth



Final call to halt 'climate catastrophe'



'Flexitarian' diets key to cutting climate change, new study claims



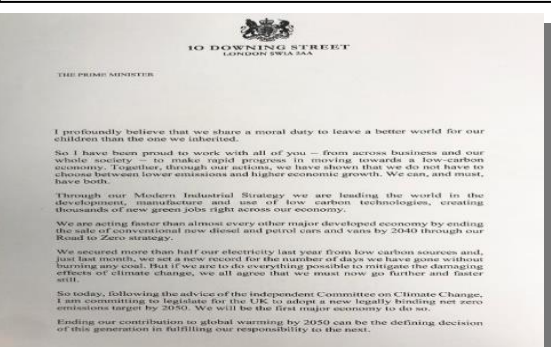
Today the UK becomes the first major economy which will end our contribution to global warming entirely by 2050



to legislate for net zero emissions
Net Zero emissions by 2050

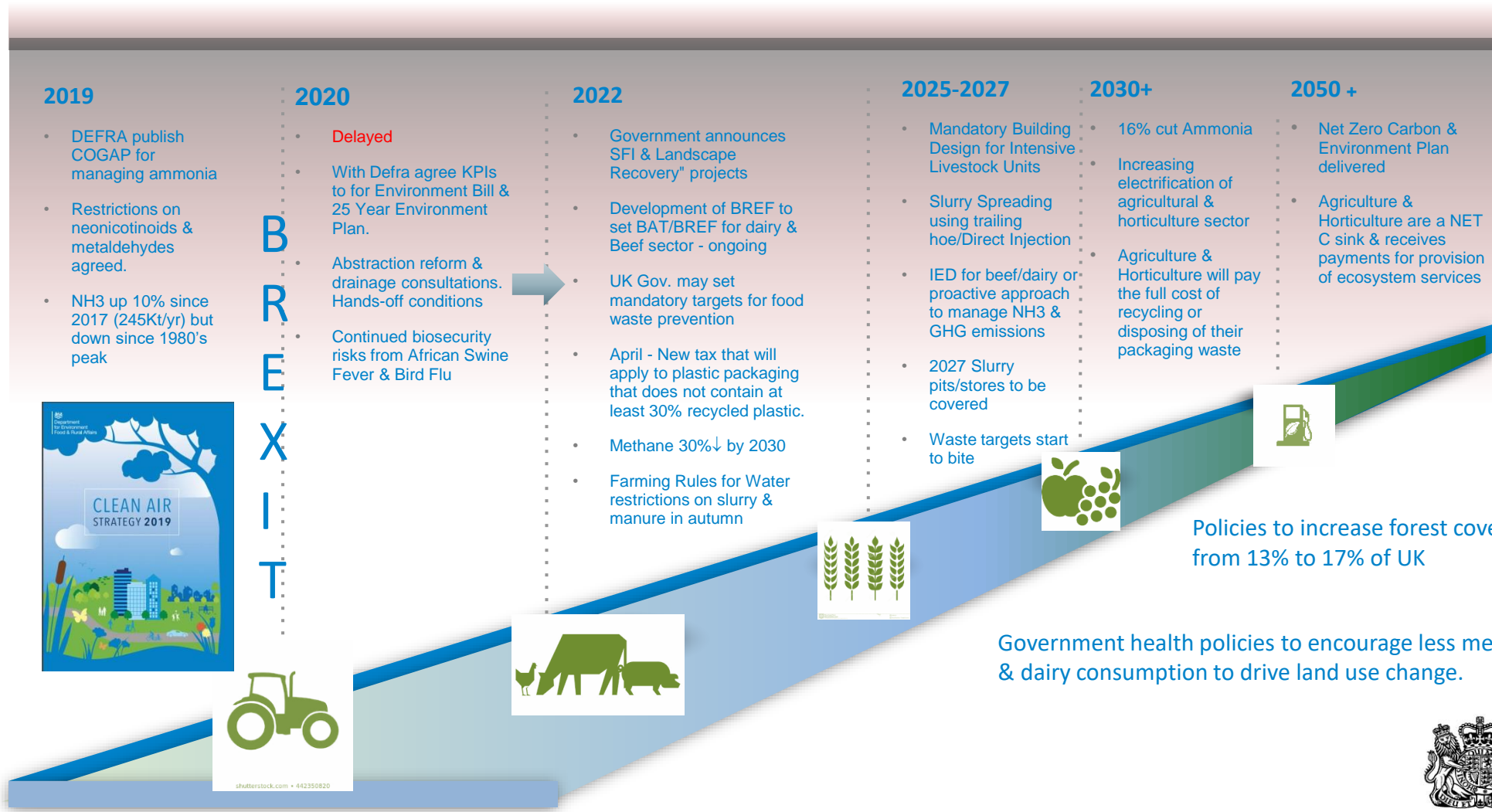
Climate change: UK government to commit to 2050 target

Government announcement to end UK's contribution to climate change



Your Horror! Scope.

What does the future hold for us all?



- The Clean Air Strategy sets out the comprehensive action that is required from across all parts of government and society to meet these goals.
- Environment Act sets five themes – air, water, resources, nature & waste



Environment Act 2021

UKCCC: range of actions required

➤ Actions must be taken now...



Behaviour change is also needed:

Reduce beef, lamb and dairy consumption by **20%** per capita by 2050.




Reduce food waste by **20%** by 2030.

CH₄ down by 30% by 2030

The Nitrogen Problem - Water

- Emissions need to reduce by a further 16% by 2030.
- Court cases linked to 
- **Controls coming in for intensive beef/dairy from 2025.**
- **EU new proposals to tighten up BREF rules for Pig & Poultry**
- Separately... **Farming Rules for Water Rule 1 – may limit the application of certain materials this autumn – risk-based approach**

• Solent Nitrates Judicial Review

- **Case On 28 May 2021, High Court** 
- **where nitrate or phosphate discharges caused by development are harming protected ecological sites.**

+ GREATER ENFORCEMENT Farming Rules for Water.

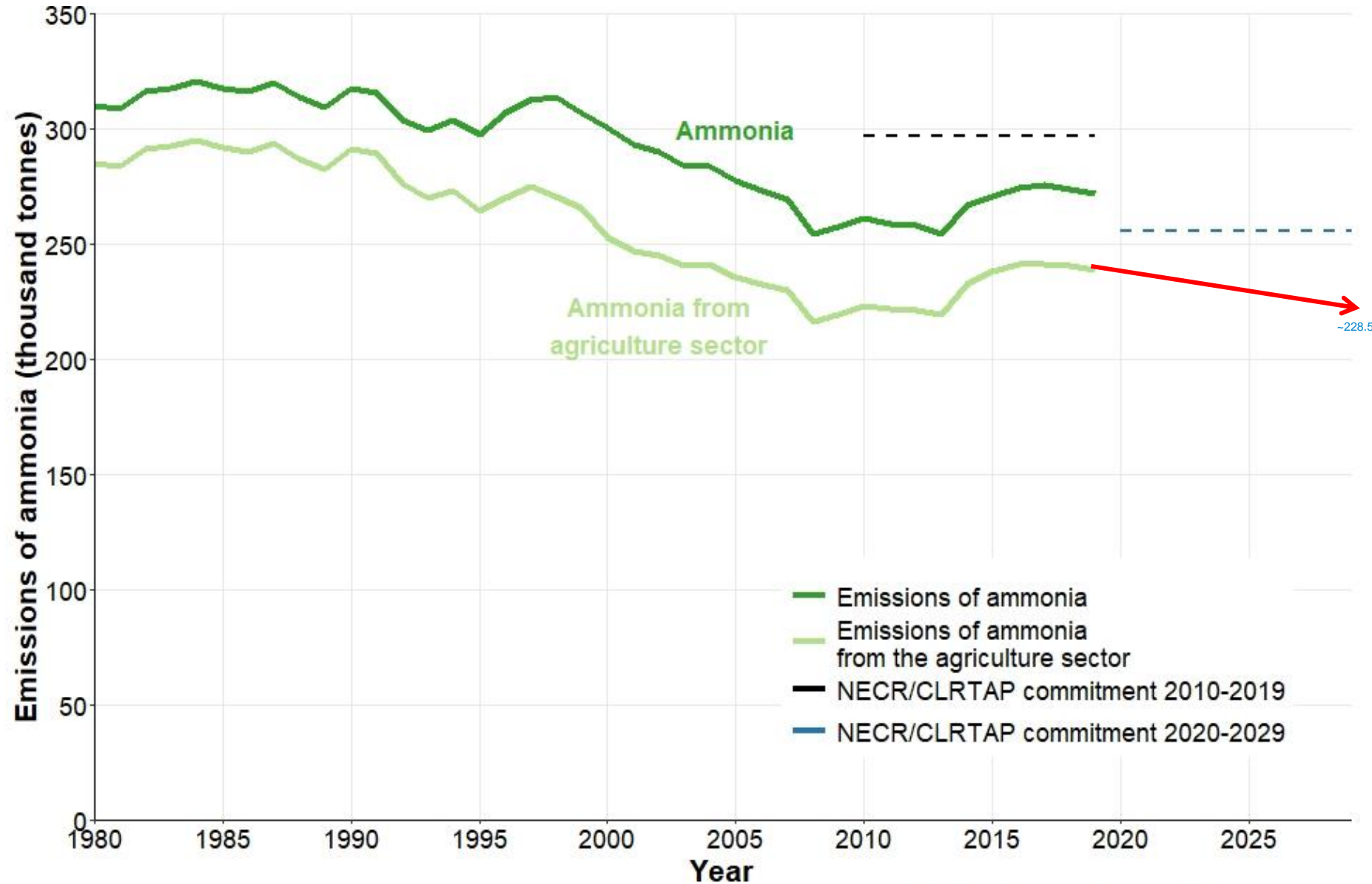
EA have recruited 50 new inspectors to prevent offences such as the one below.....

Slurry offences: Farm business fined for polluting a tributary near Cheddar...to pay £37,184 for polluting a tributary

The Nitrogen Problem -Air

Emissions of ammonia have fallen by 12 per cent since 1980, to **272 thousand tonnes in 2019**. ... Changes in the trend of **emissions of ammonia are largely driven by changes to farming practices**, such as fertiliser application, and herd sizes.

The UK meets the current emission ceilings for ammonia for the period 2010 to 2019.

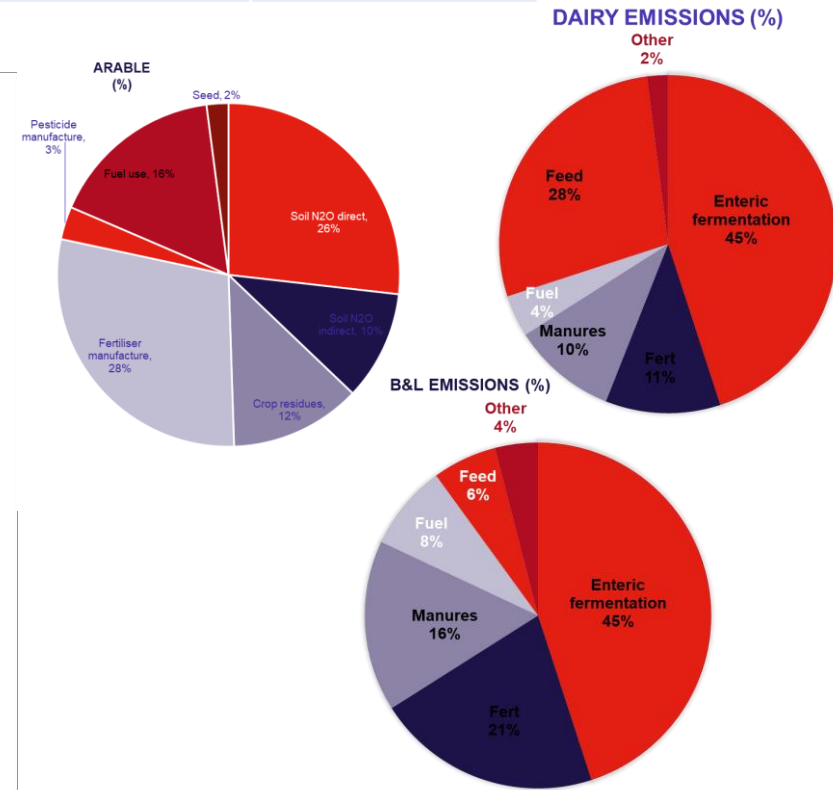
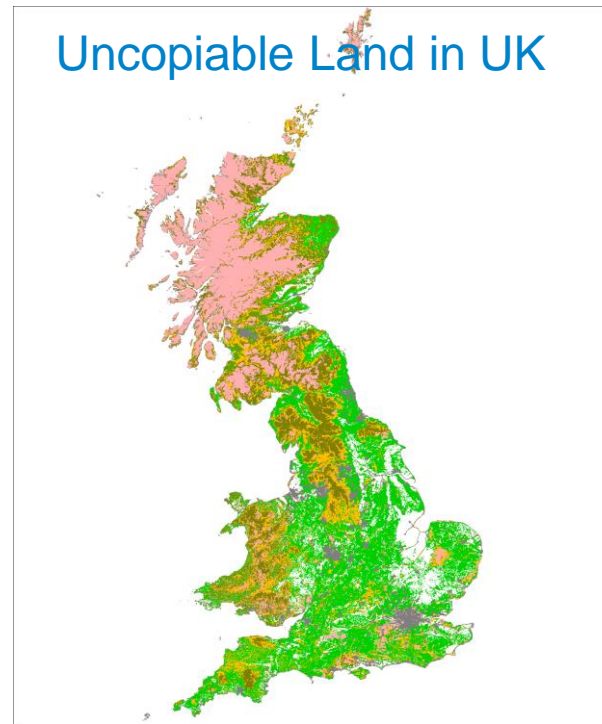


UK GHG Performance

- One of the most sustainable places in the world to produce beef, dairy and pork in thanks to our climate & geography. Abundance of grass, water, grazing land.
- Without grazing ruminants, more than 60% of agricultural land in the UK would be taken out of food production, because it is not suitable for growing crops.

Product	Global Average	UK Average	%
Beef Kg CO ₂ (e)/kg DW	25.4	16.39	- 35%
Dairy (Milk) Kg CO ₂ (e)/Kg	0.90	0.47	- 48%
Pork Kg CO ₂ (e)/kg DW	1.51	1.31	- 13%
Lamb Kg CO ₂ (e)/kg DW	21.4	25.2	+18%

THE MIRACLE OF BRITISH COWS – TURNING GRASS INTO TASTY FOOD



The Future & the Role of Sector Roadmaps

- Set ambitious goals & targets for 2022 -2050
- Provides a minimum standard for the industry, **but** stakeholders can go faster and better than the minimum
 - Dairy Road Map update published at COP26
 - B&L and Pork Roadmaps underway 2022
 - Reviewing need for cereals and oilseeds



Its supports collaboration & innovation



Provides an aligned and defensible vision



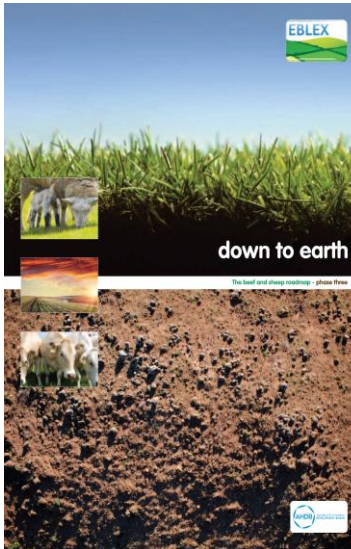
Flexible pathway for improvement and action



Underpinned by robust evidence



Supports communication of reputation work



Climate is the big challenge but its not the only issue!

Water footprint of English beef production (litres/kg meat)

Blue Water	Green Water	Grey Water	Total
67	14,900	2,690	17,657
0.4%	84.4%	15.2%	



Two pairs of jeans require as much water to manufacture them as a cow will consume in a year
 One person will use 54,385 litres in their home every year.

BEEF ISN'T A WATER HOG

Most of the droplets below represent "green water", or **natural rainfall**.¹ "Blue water" represents water that has been sourced from surface or groundwater resources. **Beef requires only 280 gallons²** of "blue water" per pound, which is **less than** the amount required to produce a pound of avocados, walnuts, or sugar. Grey water is the volume of water required to dilute pollutants.

TYPICAL BEEF

GREY

GRASS-FINISHED BEEF

97% GREEN + 2% BLUE + 1% GREY

NATURAL RAIN

LAKES, STREAMS, UNDERGROUND

WASTE

oads/Report-48-WaterFootprint-AnimalProducts-Vol1.pdf
 article/pii/S0308521X18305675 www.sacredcow.info

'Like sending bees to war':
 the deadly truth behind
 your almond-milk obsession
 – The Guardian 8th Jan 2020

THE TERRIFYING TRUTH ABOUT AVOCADOS

UK grasslands and their soils can lock up carbon, nitrogen and soak up rain

No Magic Bullet - Measure to Manage

- Focus on profitability (controllable costs – Feed, Fuel & Fertiliser) and be able to provide evidence of the environmental co-benefits.
- Focus on the details (*that matter*)...
- Set baselines – you'll need them for :
 - Carbon offsetting
 - ELMs
 - Your customers / AHDB needs data to help protect the reputation of the sector (We Eat Balanced Campaign).
 - When leasing/buying land
 - Permitting

Summary

- UK livestock sector is gearing up to meet the new challenge and to continue reducing its emissions further...whilst
- Ensuring we meet consumer demands linked to maintaining our high welfare, sustainability standards
- To ensure we can deliver affordable and secure food supplies

A vibrant landscape of a green field at sunset. The sun is low on the horizon, casting a warm glow over the scene. The sky is filled with colorful clouds, and a path leads from the foreground towards the horizon. The overall mood is peaceful and inspiring.

**‘Inspiring our farmers, growers
and industry to succeed in a
rapidly changing world’**

© Agriculture and Horticulture Development Board 2017 | All Rights Reserved